



04 AIR UNIT PRO ALUMINUM ALLOY MODULE INSTALLATION GUIDE

* Note: 3D effect is for reference only. The actual product prevails.

*Due to the small screw specifications, please install manually. Avoid using an electric screwdriver to prevent excessive torque, which may cause screw breakage.

Step 1

Remove the **four screws** from the top of the **O4 Air Unit PRO**.



Step 2

Gently lift the top cover from the antenna interface and remove the original antenna.

Step 3



01

As shown in the diagram, place the antenna base, 3D printed parts, and antenna in their respective positions.



02

Secure the printed part inside the antenna base.



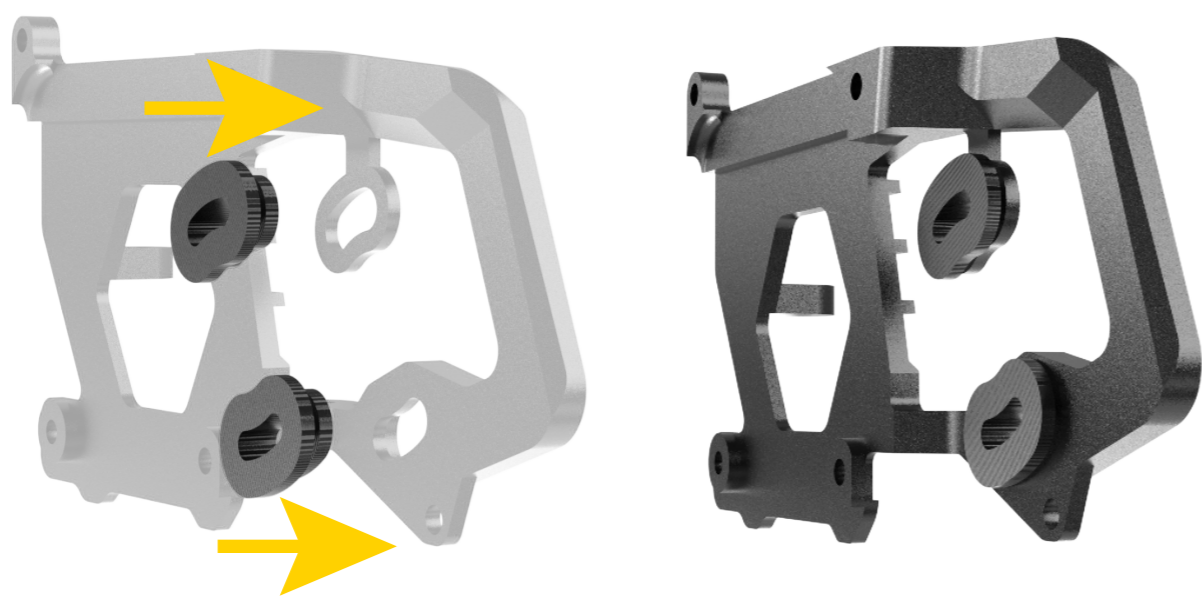
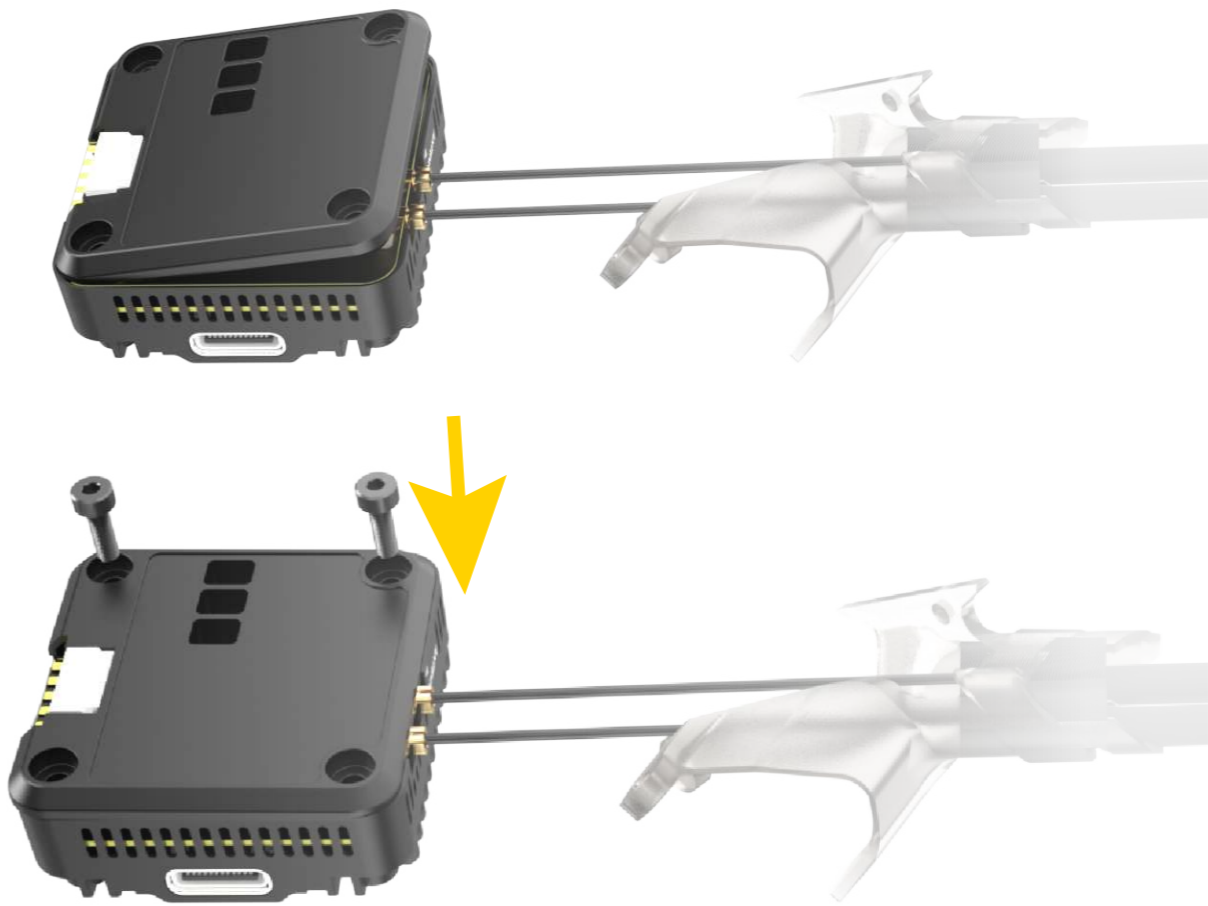
03

Press the antenna down to fix it in place.

*The installation process for the left and right antennas is the same.

Step 4

Reattach the antenna back to the O4 Air Unit PRO, cover the top plate, and secure it with two original screws.



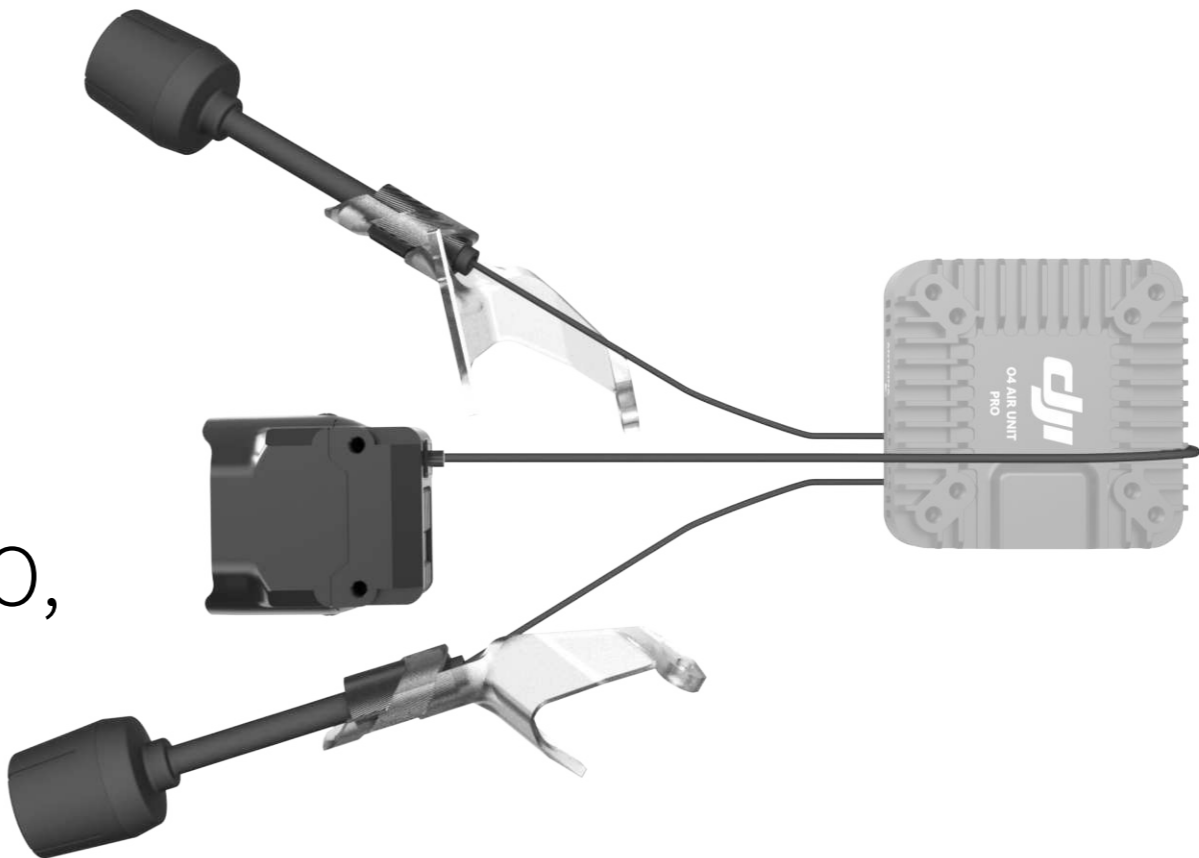
*Left side shown as an example.

Step 5

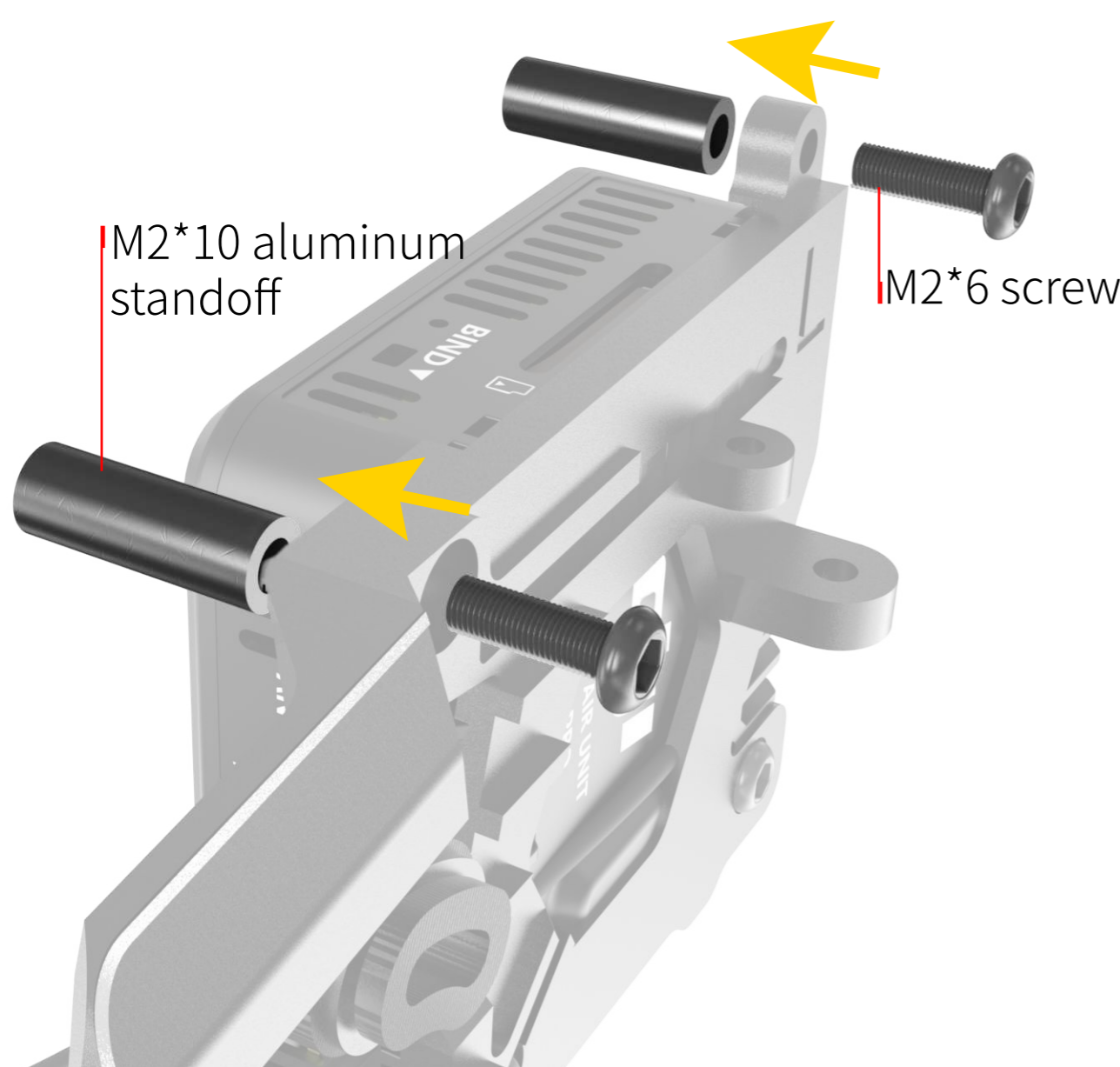
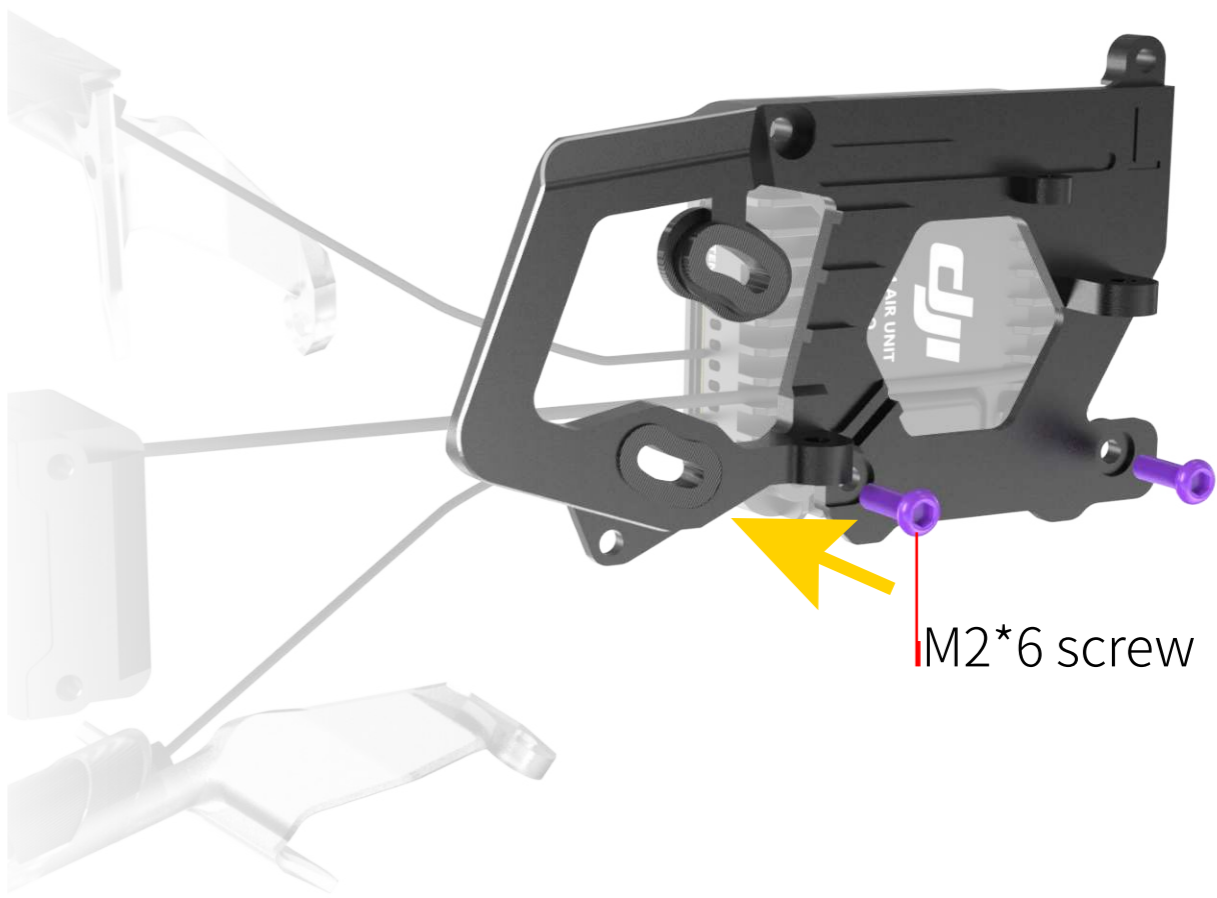
Install lens shock-absorbing pads onto the aluminum alloy side panels marked “L” and “R” (Note: The wider side should face inward).

Step 6

Place the camera cable into the groove of the O4 Air Unit PRO, and adjust the antenna position to face forward.



Secure the aluminum alloy side panel marked “L” with two **M2*6 screws**.

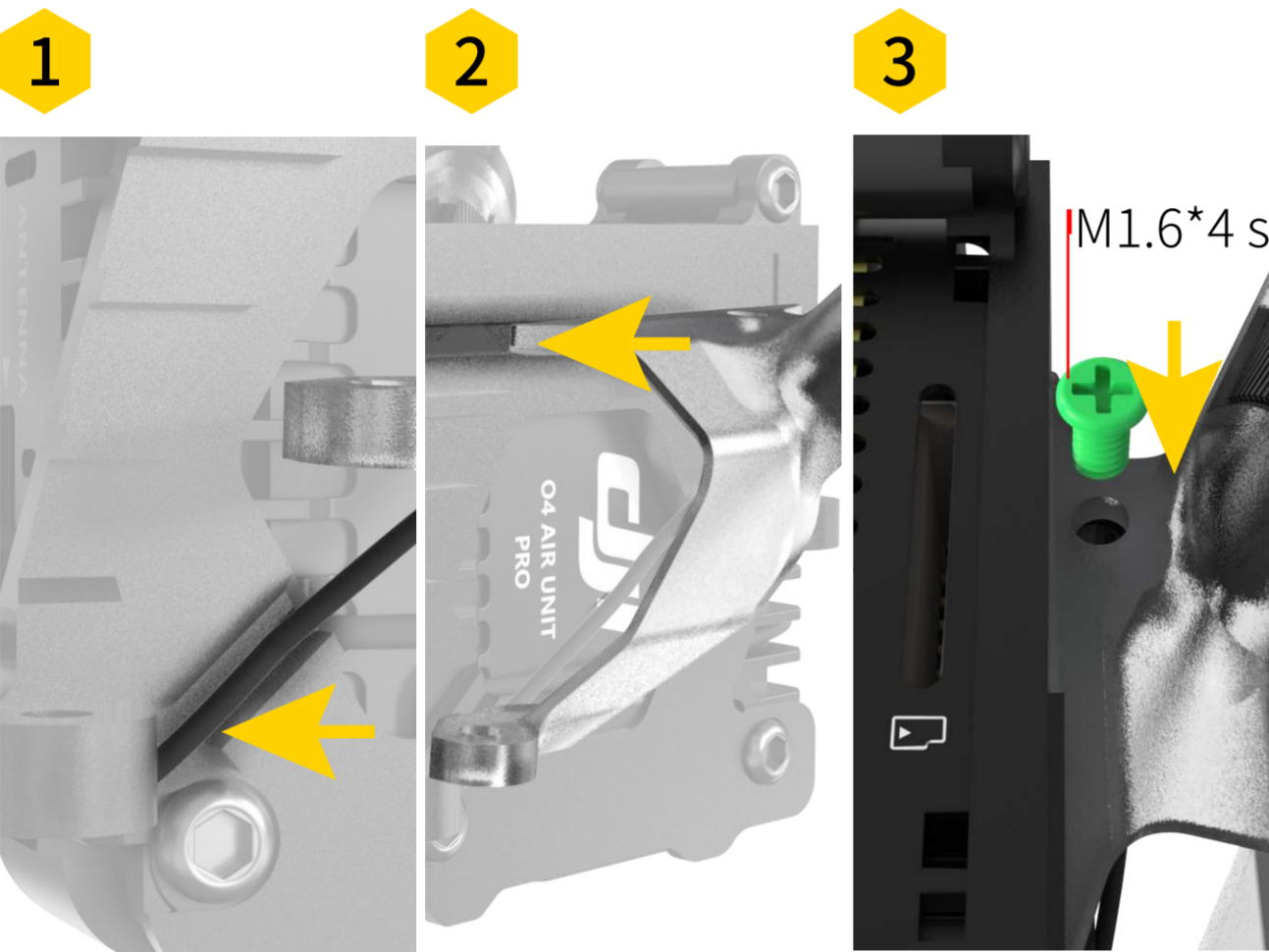
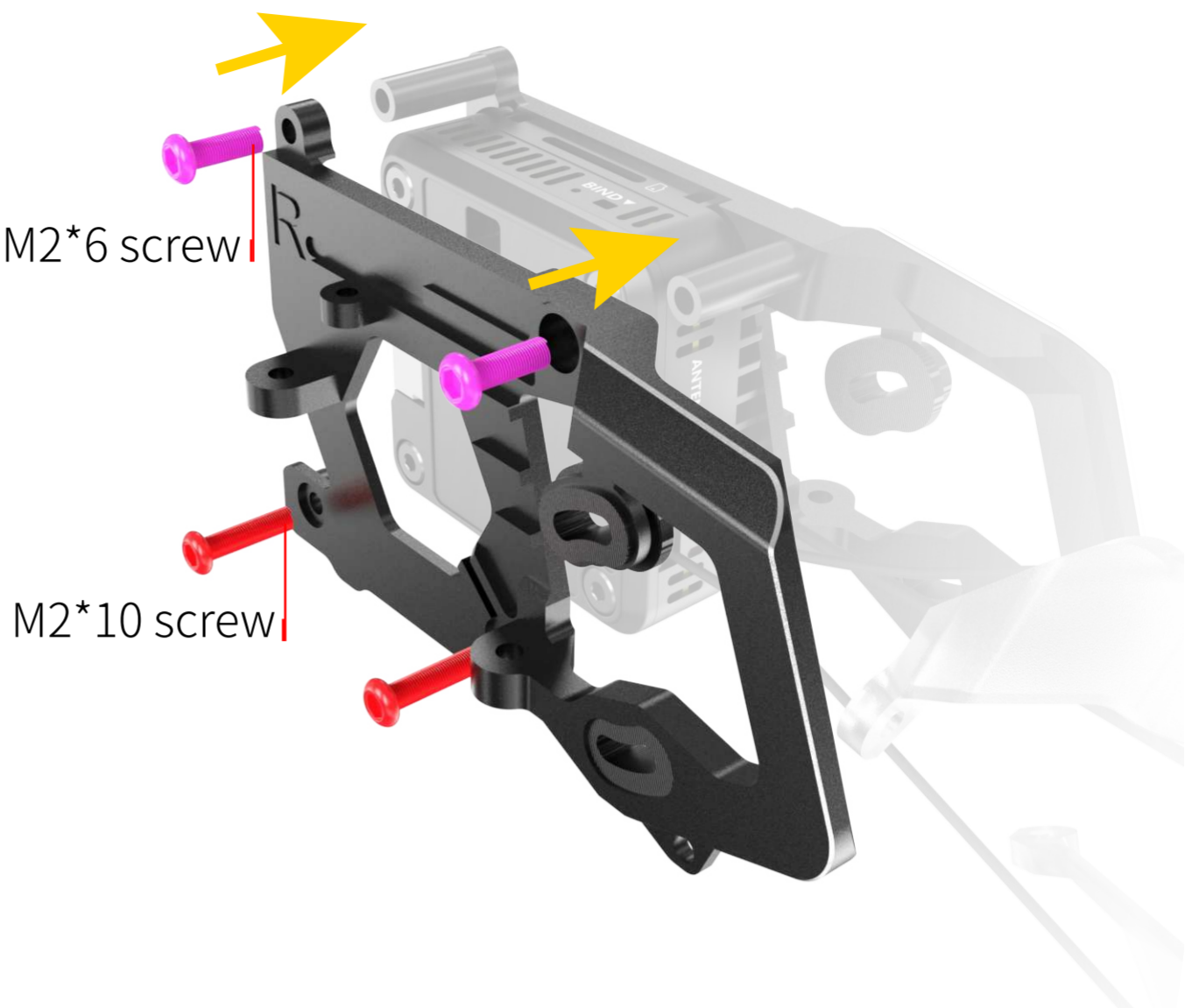


Step 7

Use **M2*6 screws** to connect and secure the “L” side panel to the **M2*10 aluminum standoff**.

Step 8

Use two **M2*6 screws** and two **M2*10 screws** to secure the “R” aluminum alloy side panel to the head and the right side of the O4 Air Unit PRO.

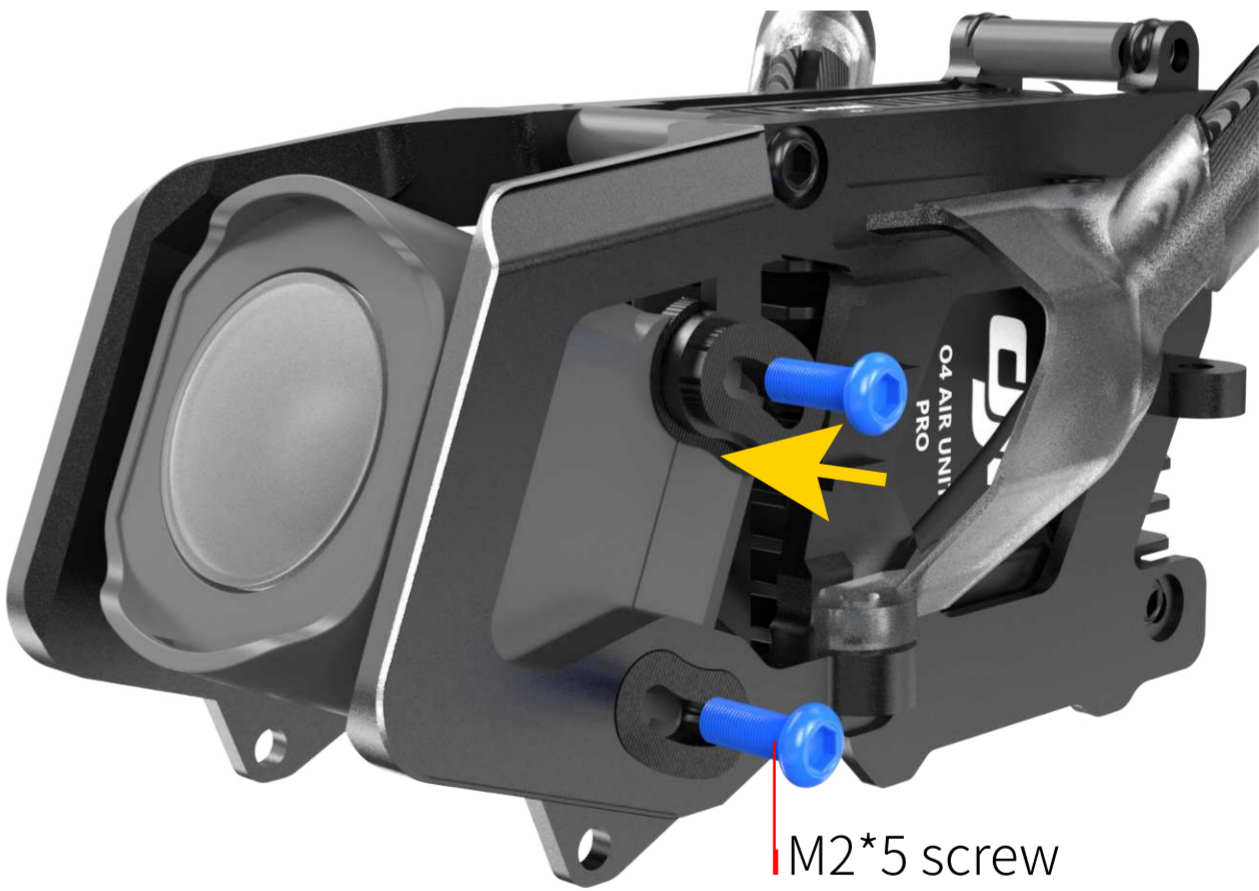


Step 9

Install the feed line and antenna base into the corresponding slots and secure the left and right antenna bases with **M1.6*4 screws**.

Step 10

Fix the camera into the designated position and secure it with **M2*5 screws**.



Step 11

Use **M2*6 screws** and **M2*22 mm aluminum standoff** to connect and secure the left and right aluminum alloy side panels.